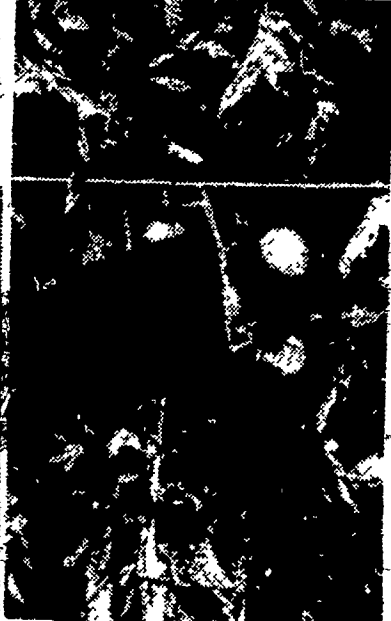


# Lancaster Farming

O. 35 Lancaster, Pa., Saturday, July 18, 1959 \$2 Per Year

## Hybrid 'Love Apples' Prove Value On County Farms



SHOWN ABOVE is one of Funk's double-vine Pa. 103 plants. Note the thick healthy vines and large, high-quality fruit, hanging in heavy cluster. —LF PHOTO

HENRY HEISEY, left, and B. L. Pollack, Penn State vegetable breeding specialist, inspect some Penn State hybrid tomato varieties being tested at Heisey's farm in the Washington Boro community.

H. FUNK, operator of the Millersville Truck president of both Lancaster County and Penna. Growers' Associations, checks one of his double Pa. 103 hybrid tomato tests. Funk is growing this lot under irrigation, with black plastic mulch-row centers.

Records from 1958 indicate that Lancaster County growers might increase their gross income an acre by planting new hybrid tomatoes developed by the Penna. Agricultural Experiment Station.

At the Washington farm of Henry Heisey, a summer comparison of the newly released Penna. Pa. 103, with several varieties Stokesdale and experimental Pa. 103 yielded 23.8 tons per acre, compared to 16.7 tons per acre for Stokesdale. Pa. 103 yielded a greater percentage of Number one and Number two quality tomatoes—free of cracks and

### It Rained Last Week

It rained confusion for Lancaster Farming last week. In our feature story, highlighting the achievements of Martin E. Greider, Lancaster RD 2, as the "1959 Conservation Farmer of the Year", we erroneously and unexplainably confused his nickname of "Mari" for the Christian name "Mark".

That is the way it appeared, even in large-headline type, throughout the article.

To Mr. Greider, his family and friends and our readers, we apologise for an inexcusable error.

### County 4-H Field Day

County 4-H members will gather July 23 at Long Park in Lancaster for the annual 4-H Field Day, beginning at 2 p.m.

Afternoon activities will include swimming and competitive sports events. A vesper campfire and candle-light service will be held in the evening.

Each event will be directed by County 4-H Council members, according to Fred Barnhart, 4-H Agriculture Council president, who presided over the planning meeting July 13.

The program will be concluded at 10 p.m., following evening events.

July 28 has been set as rain date for the Field Day, Barnhart added.

Also during the July 13 Council meeting, an assessment of 10 cents per county 4-H member was voted to cover expenses during the year. The Council discussed suggestions for future activities, also.

Next council meeting will be a "doggie roast" at 7 p.m. August 4. Place will be announced later.

### Set For Wed. in Long Park

### Holstein Field Day Set July 30

The annual Field Day of the Lancaster County Breeders' Assn. has been scheduled for July 30 at 10 a.m. on the farm of Henry E. Kettering, Lititz RD 3. (Farm north of Neffsville on Rt. 501, directly across from entrance to airport.)

A dairy judging contest will launch the program, with County Agent Max M. Smith, as official judge. Awards will be in three divisions; juniors, ladies and men.

A chicken barbecue will be served at noon, with tickets \$1.50 and 75c.

At 1:30 the afternoon program will start, with Arthur Nesbitt, secretary-fieldman of the Pa. Holstein Assn. as the principal speaker.

### SPABC Field Day and Cattle Show, Aug. 5 & 6

Officials of Southeastern Penna. Artificial Breeders Cooperative Assn. have announced plans for the annual SPABC Field Day at co-op headquarters on the Rt 230 by-pass.

This year for the first time, according to Eugene Paules of SPABC, the program will be divided into two days. This will provide needed emphasis for the "lesser dairy breeds" of Jersey, Ayrshire and Brown Swiss.

These breeds will be judged during the evening of August 5, starting at 7 p.m.

Judging of Guernsey and Holstein entries will begin at 10 a.m. August 6.

Official judges for the 2-day event will be Dr. John McKittrick, Dublin, Ohio for Holstein and Ayrshire; and Joe S. Taylor, Penn State

Smith will comment on the judging contest and placings and prizes will be awarded.

The Field Day committee of Richard Landis, Melvin Peifer and Vincent Hoover points out that the event is open to the general public as well as association members. Members are urged to invite friends and neighbors.

### FIVE-DAY WEATHER FORECAST

Saturday - Wednesday  
Temp. will avg. 2-5 deg. above normal range of 67-87. Warmer Sat.-Mon. Little cooler about Wed. Mostly fair but chance of showers, Sun. & Mon. Week's rain in Lancaster 1.37 inches.

### Family of Real 'Pros'



STOLTZFUS FAMILY of Elverson, just over the line in the edge of Berks are hosts and champions alike during the Tri-County area SPABC "Twilight Wednesday evening. The operators of the Stoltzfus dairy, boasting 38 Holsteins lb butterfat average and 13,000-plus milk production average, are Ralph, at left, on the right. They were the official farmer-hosts of the event, which attracted more than 300 persons. The eight-month old heifer Ralph is holding wears a show by the partner's father, Stephen Stoltzfus, second from left, as top judge of Holsteins during the program. The elder Stoltzfus is being congratulated by a Penn State dairy specialist and speaker for the evening. —LF PHOTO