

## FROM FRONT PAGE

### CHEATERS

somehow gets by, the cheater would get a better grade than someone slugging it out and making the effort," said Christofferson.

Christofferson said the numbers of cheaters he caught this year are not too different than previous years. In general, he said he catches about five to 10 percent of his students plagiarizing every year.

"Professors are fed up with dealing with this issue so they avoid assigning papers. It's lots of work to grade papers. So students don't get many opportunities to write in class," said Christofferson. "I am already changing the way I teach and if plagiarism continues it will be hard to teach writing. Some students are already saying that they do not get enough

writing experience. Plagiarism undermines the entire higher education system."

Christofferson is not the only professor who has to deal with academic dishonesty. It is a concern for many educators on campus. Dr. Rod Troester, associate professor of speech communication, said, "This is a simple issue. If students do their own work and credit the work of others, then it's not a problem.

"If someone cheats they should fail," said Troester. "Honesty and integrity are important. Maybe [cheating] is a problem and maybe it's not. There may be more cheating going on than people know of. There needs to be an appropriate punishment."

Penn State University has even gone so far

as to create a new grading policy for cheaters. The new XF grade can be given to indicate that the failing grade was a result of academic dishonesty. The XF grade, however, is usually reserved for repeat offenders or other major violations of academic integrity.

"Cheating is a serious issue," said Christofferson. "Some students believe they won't be caught or are willing to take a calculated risk."

Before any students take the calculated risk of cheating they may want to consider the penalties involved.

To see Penn State's statement on academic integrity go to [www.pserie.psu.edu/faculty/academics/integrity.htm](http://www.pserie.psu.edu/faculty/academics/integrity.htm).

### PERRY RENOVATIONS

will include the addition of 47,800 square feet and 150 beds, as well as remodeling the current rooms.

"We will replace the existing roof with a tiered metal roof," said Geering. Other improvements to the existing space will include rewiring, new cosmetics, new ceiling tiles, new lights, new mechanics, and the bathrooms will be reworked. The lounge area will be renovated and will include new windows, new lighting, and a new ceiling

During construction, the school is hoping to keep Perry open. The design process will take approximately one year, and renovations of the existing spaces will take place during the summer months of 2003 and 2004, when no one is living in Perry. The new part of the building will be constructed during the academic year.

These renovations will provide more housing for on-campus students, and will be a needed addition to the campus.

"Perry will become an exciting transition to the housing areas of the campus," said Geering. "We have the opportunity to create a beautiful addition to Behrend."

Once construction is finished - scheduled for fall 2004 - Perry will still be an underclassman residence hall.

### UNITED WAY

since negatively affected donations. Also, charities not related to the Sept. 11 attacks are finding it harder to get donations.

The United Way Campaign was headed by four co-chairs. The campaign members included Brandi Hovis, the Student Government Association president; Dr. Margaret Thoms, associate professor of management; Paul Newlin, director of Corporate and Adult Learning; and Rande Joy, a maintenance mechanic.

The campaign was additionally supported by Campaign Coordinator Catherine

Hanhauser and by Peggy Shupenko, who provided office assistance.

Working on the United Way campaign has especially touched Dr. Thoms. "I work with generous people who care about the community," she said. "I feel very good about that."

During the 2000 United Way campaign, the Behrend Campus raised \$38,328 for local United Way agencies. Including Behrend's 2000 contribution, the United Way allocated \$4.5 million to local assistance programs. These programs help

thousands of local residents.

Most of the money from this year's campaign will go to the United Way of Erie County, which helps local non-profit organizations. Some local organizations assisted by the funds are the American Red Cross, Greater Erie County Chapter; the Boys and Girls Club of Erie, Inc.; the International Institute of Erie; and the French Creek Council Boy Scouts of America. Of the money raised, \$1,645 has been designated to the September 11th Fund.

### QUESTION OF THE WEEK

- asked by Kelly Walsh



"A gallon of mustard from my Grandma. I like mustard but not as much as Casey Ponsoll!"

Matty Keith  
Marketing, 07



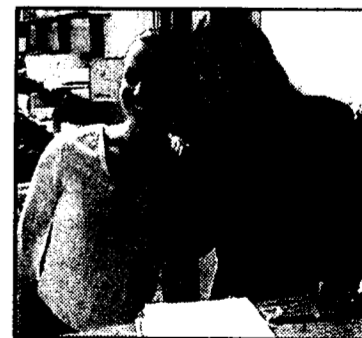
"A cassette player from my mom."

Cedric Pinder  
Computer Engineering, 01



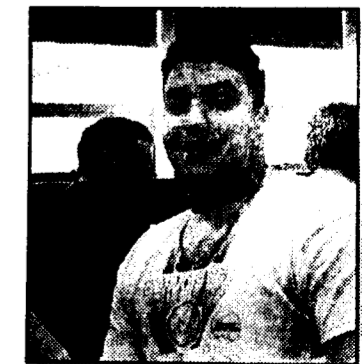
"A subscription to National Geographic and a dictionary when I was 7."

Joanne Kloc  
English Lit, 07



"A kiss from Jess Catherman; a fluorescent pink sweatshirt."

Lisa Lindenburger, Erin Wright  
Business 05; English Lit 09



"A Stefano outfit - white jeans and a purple sweatshirt from Fashion Bug."

Jason Karas  
Marketing, 07

# The Behrend Beacon

## is seeking staff members for the Spring 2002 semester.

### Available positions include:

- Advertising Manager
- Advertising Staff
- Public Relations Manager
- Staff Photographers
- Asst. Editorial Page Editor
- Calendar Page Editor
- Copy Editors
- Associate Editors
- Staff Writers
- Editorial Columnists

•Do it for CREDIT!  
Editors and writers can receive up to 3 credits.

•Do it for \$\$\$!  
Ad manager/ad staff can receive a stipend + 10% commission on each ad sold!

•Do it for YOURSELF!  
Involvement with your college paper is one of the ways to gain writing experience and mad props for that resume!

Interested? call us at 898-6488 • e-mail [behrcoll5@aol.com](mailto:behrcoll5@aol.com)